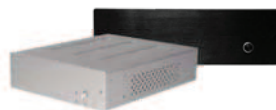




Mini ITX Desktops



Model no. <i>Modell Nr.</i>	Petit PT02	Petit PT03	Petit PT04	Petit PT05
Material	Aluminium front panel, 1.0mm SECC body <i>Aluminium Frontblende, 1.0mm SECC Chassis</i>	Aluminium front panel, 1.0mm SECC body <i>Aluminium Frontblende, 1.0mm SECC Chassis</i>	Aluminium front panel, 1.0mm SECC body <i>Aluminium Frontblende, 1.0mm SECC Chassis</i>	Aluminium front panel, 1.0mm SECC body <i>Aluminium Frontblende, 1.0mm SECC Chassis</i>
Motherboard	Mini ITX	Mini ITX	Mini ITX	Mini ITX
Drive bay <i>Laufwerk</i>	Internal: 1 x 2.5" External: 1 x slim optical drive <i>Intern: 1 x 2.5"</i> <i>Extern: 1 x optisches Slim Laufwerk</i>	Internal: 1 x 2.5" Intern: 1 x 2.5"	Internal: 1 x 2.5" Intern: 1 x 2.5"	Internal: 1 x 3.5" External: 1 x slim optical drive <i>Intern: 1 x 3.5"</i> <i>Extern: 1 x optisches Slim Laufwerk</i>
Cooling system <i>Kühlung</i>	Side: venting holes Top: venting holes <i>Seite: Lüftunglöcher</i> <i>Oben: Lüftunglöcher</i>	Side: venting holes Top: venting holes <i>Seite: Lüftunglöcher</i> <i>Oben: Lüftunglöcher</i>	Side: venting holes Top: venting holes <i>Seite: Lüftunglöcher</i> <i>Oben: Lüftunglöcher</i>	Side: venting holes Top: venting holes <i>Seite: Lüftunglöcher</i> <i>Oben: Lüftunglöcher</i>
Max. cooler height <i>max. Kühlerhöhe</i>	52mm(H)	46mm(H)	33mm(H)	45mm(H)
Expansion slots <i>Erweiterungsslots</i>	--	--	--	--
Multimedia	--	--	--	--
Front I/O ports <i>I/O Frontanschlüsse</i>	2 x USB2.0, 1 x IEEE1394, 1 x audio, 1 x MIC	--	2 x USB 2.0, 1 x IEEE1394, 1 x audio, 1 x MIC	2 x USB 2.0, 1 x IEEE1394, 1 x audio, 1 x MIC
Power supply <i>Netzteil</i>	Fanless 60W DC/DC board & AC adapter (80W peak)	Fanless 60W DC/DC board & AC adapter	Fanless 60W DC/DC board & AC adapter	Fanless 60W DC/DC board & AC adapter
Color <i>Farbe</i>	black, silver <i>schwarz, silber</i>	black, silver <i>schwarz, silber</i>	black, silver <i>schwarz, silber</i>	black, silver <i>schwarz, silber</i>
Net weight <i>Gewicht</i>	2.4 kg	2.1 kg	2.1 kg	2.4 kg
Dimension (W x H x D) <i>Maße (B x H x T)</i>	185mm x 58mm x 240mm	190mm x 58mm x 230mm	185mm x 43.4mm x 240mm	285mm x 55mm x 235mm
Extra	1 x HDD LED, 1 x power LED	1 x HDD LED, 1 x power LED, optional wall mount bracket	1 x HDD LED, 1 x power LED, optional wall mount bracket, support customize rear I/O plate (special order)	1 x HDD LED, 1 x power LED

Awards



Mini ITX Desktops



Model no. <i>Modell Nr.</i>	Petit PT06-120 / PT06	Petit PT07	Petit PT08	Petit PT09-120 / PT09
Material	Aluminium front panel, 1.0mm SECC body <i>Aluminium Frontblende, 1.0mm SECC Chassis</i>	Aluminium front panel, 1.0mm SECC body <i>Aluminium Frontblende, 1.0mm SECC Chassis</i>	Aluminium front panel, 1.0mm SECC body <i>Aluminium Frontblende, 1.0mm SECC Chassis</i>	Aluminium front panel, 1.0mm SECC body <i>Aluminium Frontblende, 1.0mm SECC Chassis</i>
Motherboard	Mini ITX	Mini ITX	Mini ITX	Mini ITX
Drive bay <i>Laufwerk</i>	Internal: 1 x 3.5" or 1 x 2.5" External: 1 x slim optical drive <i>Intern: 1 x 3.5" oder 1 x 2.5"</i> <i>Extern: 1 x optisches Slim Laufwerk</i>	Internal: 1 x 2.5" <i>Intern: 1 x 2.5"</i>	Internal: 1 x 2.5" External: 1 x slim optical drive <i>Intern: 1 x 2.5"</i> <i>Extern: 1 x optisches Slim Laufwerk</i>	Internal: 1 x 2.5" or 1 x 3.5" External: 1 x slim optical drive <i>Intern: 1 x 2.5" oder 1 x 3.5"</i> <i>Extern: 1 x optisches Slim Laufwerk</i>
Cooling system <i>Kühlung</i>	Side: venting holes Top: venting holes <i>Seite: Lüftunglöcher</i> <i>Oben: Lüftunglöcher</i>	Side: venting holes Top: venting holes <i>Seite: Lüftunglöcher</i> <i>Oben: Lüftunglöcher</i>	Side: venting holes Top: venting holes <i>Seite: Lüftunglöcher</i> <i>Oben: Lüftunglöcher</i>	Side: venting holes Top: venting holes <i>Seite: Lüftunglöcher</i> <i>Oben: Lüftunglöcher</i>
Max. cooler height <i>max. Kühlerhöhe</i>	45mm(H)	70mm(H)	70mm(H)	127mm(H)
Expansion slots <i>Erweiterungsslots</i>	--	--	--	1
Multimedia	--	--	--	--
Front I/O ports <i>I/O Frontanschlüsse</i>	2 x USB 2.0, 1 x IEEE1394, 1 x audio, 1 x MIC	2 x USB 2.0, 1 x audio, 1 x MIC	2 x USB 2.0, 1 x audio, 1 x MIC	1 x USB2.0, 1 x IEEE1394, 1 x audio, 1 x MIC
Power supply <i>Netzteil</i>	Fanless 120W (PT06-120) or 60W (PT06) DC/DC board & AC adapter	Optional PSU on board	Fanless 60W DC/DC board & AC adapter	Fanless 120W (PT09-120) or 60W (PT09) DC/DC board & AC adapter
Color <i>Farbe</i>	black, silver <i>schwarz, silber</i>	black, silver <i>schwarz, silber</i>	black, silver <i>schwarz, silber</i>	black, silver <i>schwarz, silber</i>
Net weight <i>Gewicht</i>	3.4 kg	2.0 kg	2.6 kg	2.8 kg
Dimension (W x H x D) <i>Maße (B x H x T)</i>	345mm x 55mm x 255mm	85mm x 203mm x 219mm	85mm x 203mm x 235mm	185mm x 135mm x 240mm
Extra	1 x HDD LED, 1 x power LED	1 x HDD LED, 1 x power LED, customer can choose special PSU or PSU on board	1 x HDD LED, 1 x power LED	1 x HDD LED, 1 x power LED, slim optical drive IDE adapter 1 x HDD LED, 1 x power LED, <i>Adapter für optisches Slim IDE Laufwerk</i>

Awards



Thin Mini-ITX



Model no. <i>Modell Nr.</i>	Petit PT012B		
Material	Aluminium front panel, 0.8mm SECC body <i>Aluminium Frontblende, 0.8mm SECC Chassis</i>		
Motherboard	Thin Mini-ITX		
Drive bay <i>Laufwerk</i>	Internal: 1 x 2.5" External: 1 x slim optical drive <i>Intern: 1 x 2.5"</i> <i>Extern: 1 x optisches Slim Laufwerk</i>		
Cooling system <i>Kühlung</i>	Side: venting holes <i>Seite: Lüftunglöcher</i>		
Max. cooler height <i>max. Kühlerhöhe</i>	19mm(H)		
Expansion slots <i>Erweiterungsslots</i>	--		
Multimedia	--		
Front I/O ports <i>I/O Frontanschlüsse</i>	--		
Power supply <i>Netzteil</i>	120W AC adapter (option)		
Color <i>Farbe</i>	black <i>schwarz</i>		
Net weight <i>Gewicht</i>	2.38 kg		
Dimension (W x H x D) <i>Maße (B x H x T)</i>	410mm x 52mm x 261mm		
Extra	1 x HDD LED, 1 x power LED Support VESA Mount MIS-D 75/ 75 mm x 75 mm/ M4 MIS-D 100/ 100 mm x 100 mm/ M4 MIS-E 200/ 200 mm x 100 mm/ M4		

Awards