



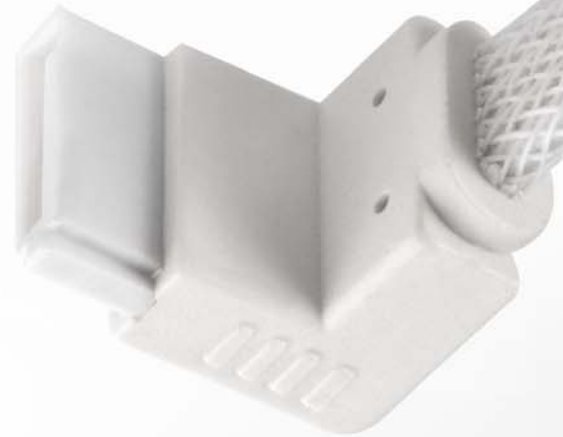
SILVERSTONE[®]
Designing Inspiration

High quality SATA III cable with non-scratch locking mechanism and 90° connector

CP08



CP08B



CP08W

- Metal-less locking design reduces wear on SATA connector
- Beautiful all black / white sleeved cable
- Commercial grade components with SATA 6Gb/s transmitting speed
- Metallic cable layer for EMI guard
- Added compatibility with 90° angled connector

Metallic cable layer
for **EMI** guard

Specifications

Model No.	SST-CP08B / SST-CP08W
Color	Black / white
Connectors	90 degree
Length	500mm
Transmitting Speed	6Gb/s



Taiwan Headquarters
12F., No.168, Jiankang Rd.,
Zhonghe Dist., New Taipei City 235,
Taiwan R.O.C.
Tel: + 886-2-8228-1238 / Fax: + 886-2-8228-7123
For sales and purchasing: sales@silverstonetek.com

USA
13626 Monte Vista Ave. Unit #A,
Chino, CA 91710,
USA
Tel: + 1-909-465-9596 / Fax: + 1-909-465-9569
For General Questions/Sales: usasales@silverstonetek.com

Europe
Brandstücken 27,
D-22549 Hamburg,
Germany
Tel: + 49-40-675931-0 / Fax: + 49-40-675931-66
For sales and purchasing: sales.eu@silverstonetek.de