

ML04 High flexibility slim Micro-ATX HTPC case with USB Type-C port



- Includes USB Type-C front port (SST-ML04B-C only)
- Support up to four 80mm fans
- Drive cages with multi-purpose mounts eliminate need for adapters
- Easy to install and cable route
- Support standard PS2(ATX) power supplies
- Support low profile expansion cards
- Incredible 350mm depth to fit comfortably inside home theater cabinet
- Lockable front door and power button ensure security of system and drives
- LED indicator with adjustable brightness

Specifications

Model No.	Type-C Version SST-ML04B-C (Black, Type-C port)
	USB 3.0 Version SST-ML04B (Black)
Material	Aluminum front door and plastic front panel, steel body
Motherboard	Micro ATX, Mini-DTX, Mini-ITX
Drive Bay	External 5.25" x 1 (compatible with one 3.5" HDD or two 2.5" SSD) Internal 3.5" x 2 (compatible with one 2.5" SSD each), 2.5" x 1
Cooling System	Side Right: 4 x 80mm fan slot Left: Hard drive vents Top Oversized CPU vents with included FF141 fan filter
Expansion Slot	4+1
Front I/O Port	SST-ML04B-C: USB Type-C x 1, USB 3.0 x 1, Audio x 1, MIC x 1 SST-ML04B: USB 3.0 x 2, Audio x 1, MIC x 1
Power Supply	Optional standard PS2(ATX) up to 140mm
Expansion Card	4 x low profile + 1 x utility, width restriction 2.95" (74mm)
Limitation of CPU cooler	70mm
Limitation of PSU	140mm
Net Weight	4kg
Dimension	440mm (W) x 105mm (H) x 350mm (D), 16.2 liters 17.32" (W) x 4.13" (H) x 13.78" (D), 16.2 liters
Extra	Support Kensington locks





SILVERSTONE

▶ I/O ports include microphone, audio and 2x USB 3.0



▶ I/O ports include microphone, audio, USB 3.0 and USB Type-C ports (SST-ML04B-C only)



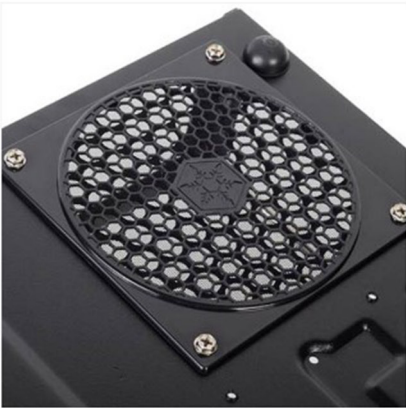
▶ Plastic foot stand



▶ Lockable power button



▶ PSU filter



▶ LED indicator with adjustable brightness



▶ Lockable front door

