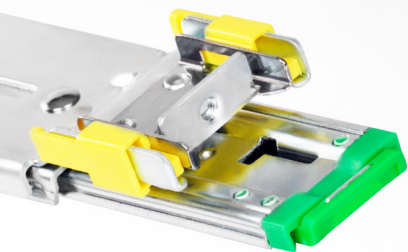


Kit guida scorrevole con cuscinetto a sfere ad incastro per telaio rackmount

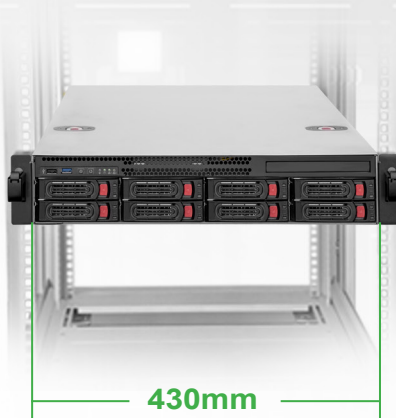
RMS03-26



- Design ad incastro
- Carico massimo fino a 100 libbre (45kg)
- Supporto di telai larghi 430mm



Design ad incastro



430mm



clip a molla



731mm

Specifiche

Modello nr.	SST-RMS03-26
Material	Con zincatura SPCC
Peso massimo supportato	45kg
Peso netto	2,43kg
Dimensioni	731mm (L) x 44mm (A) x 23mm (P)

* Compatibile con gli chassis rackmount SST-RM22-308, SST-RM21-304, SST-RM21-308, SST-RMB44-W, SST-RMB51 e SST-RMB51-W.